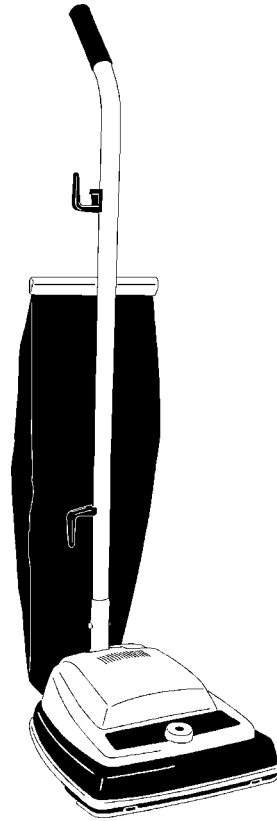


PS 12



PARTS LIST

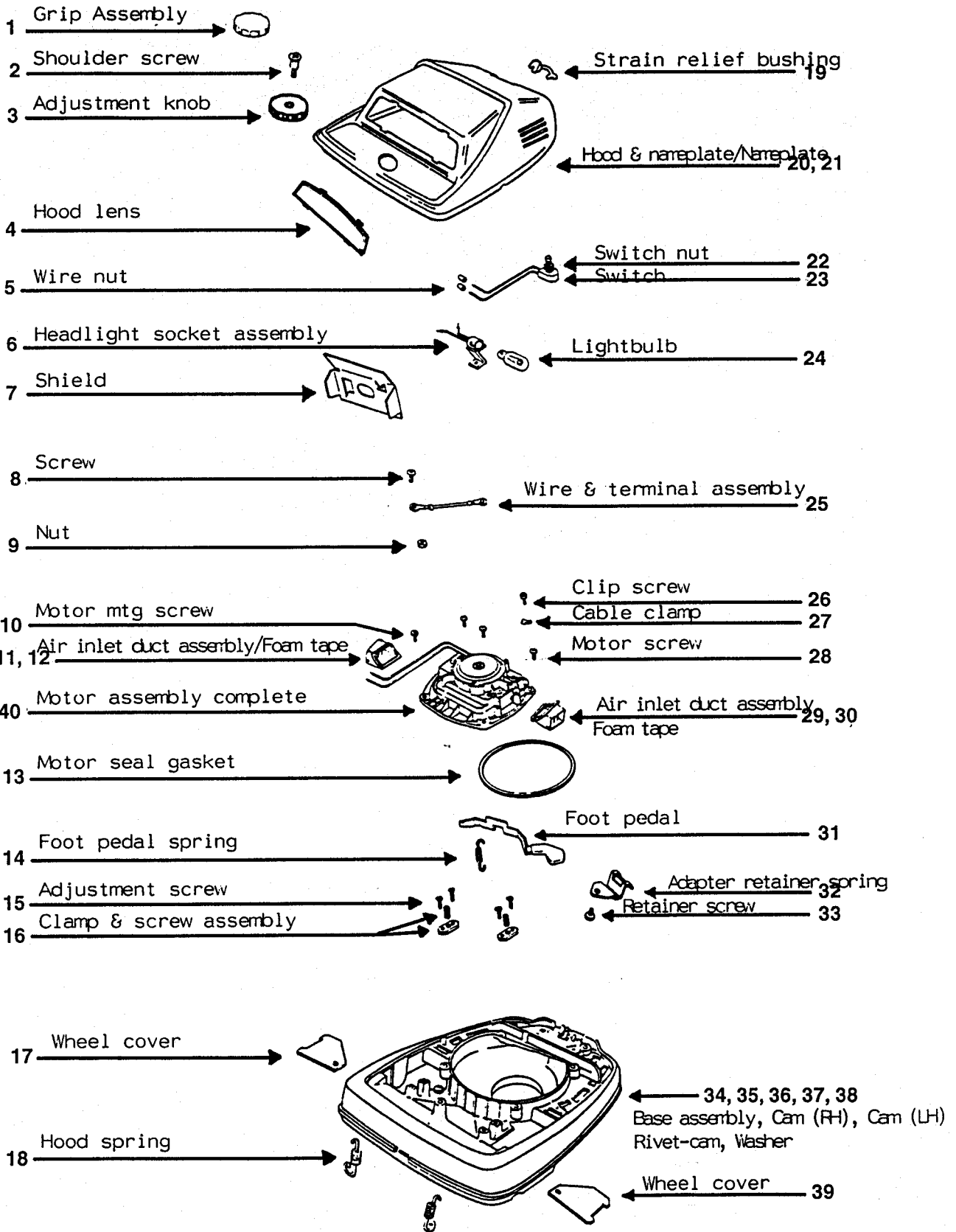
Euroclean MODEL 56649031

DESCRIPTION	PAGE
BASE ASSEMBLY	2-3
AXLE / BRUSH / BUMPER ASSEMBLIES	4-5
VAC MOTOR ASSEMBLY	6-7
HANDLE ASSEMBLY	8-9
BAG ASSEMBLY / WIRING DIAGRAM	10-11

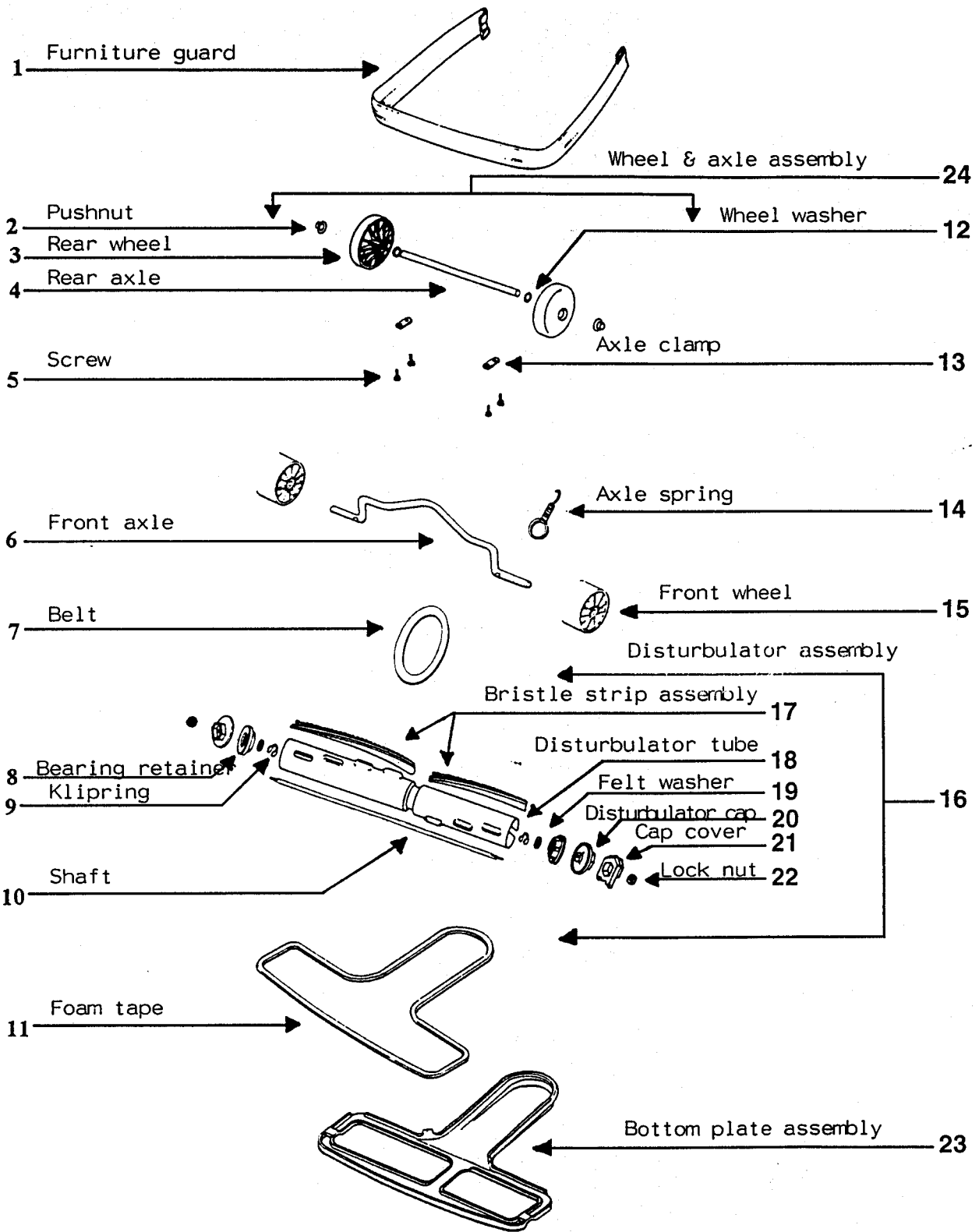
WHEN ORDERING PARTS

- * Use the 8 digit numbers from the "Ref. No." columns in this parts list.
- * Specify the model and serial number of the machine.
- * Use the space below to record the model and serial number for future reference.

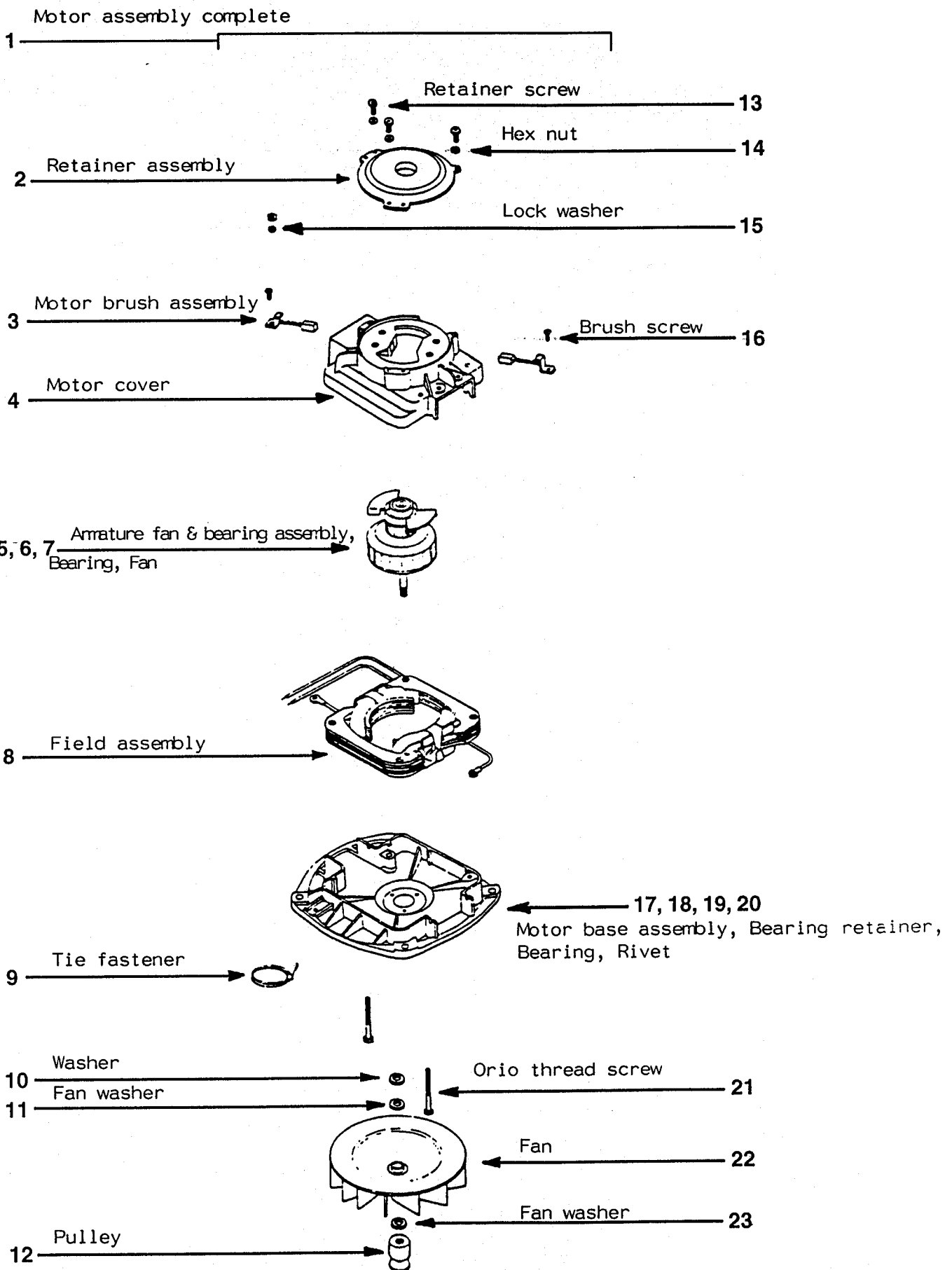
Model _____ Serial No. _____



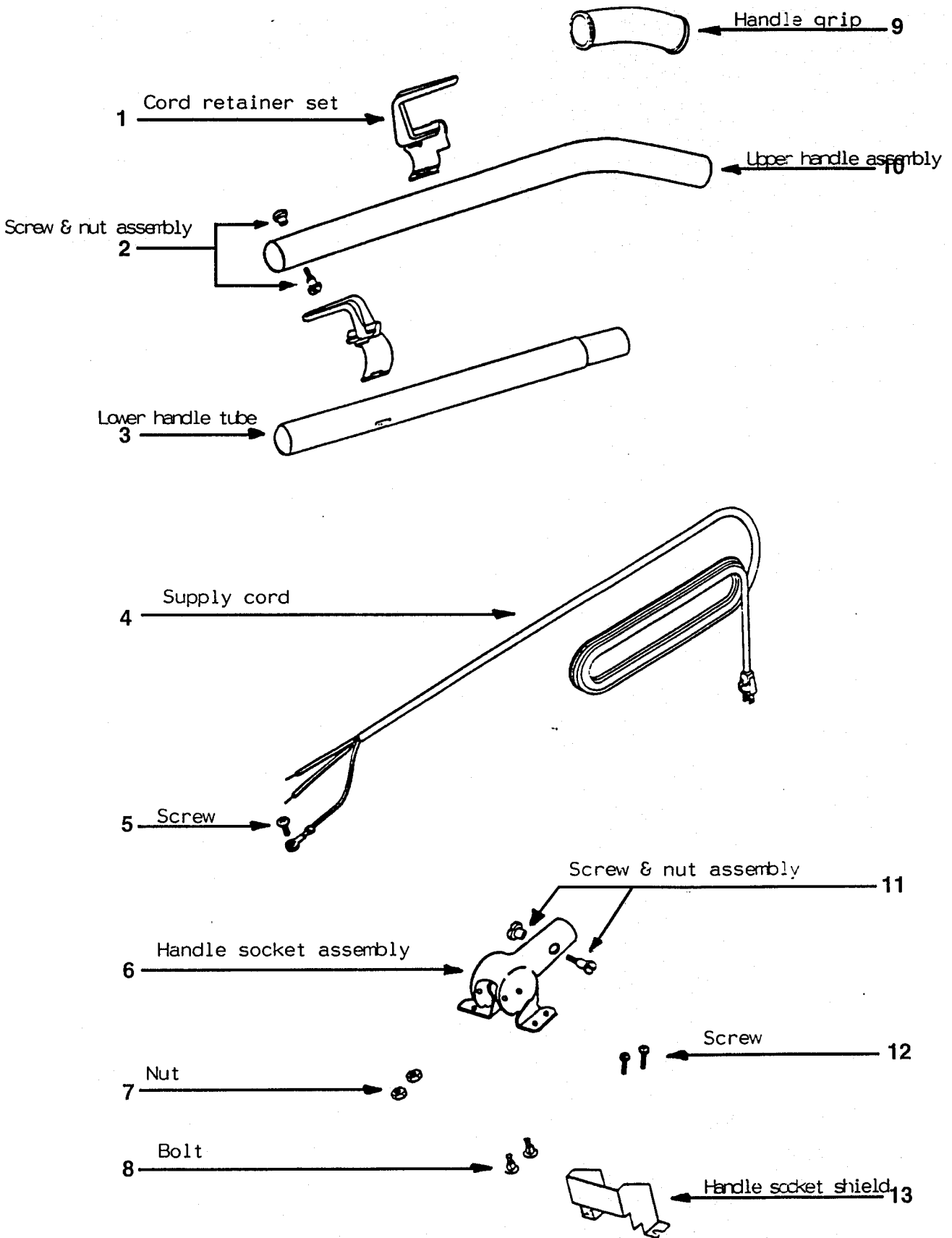
Item	Ref. No.	Qty	Description
1	56649447		Grip Assembly
2	56703420		Shoulder Screw (10 pack)
3	56649341		Adjustment Knob
4	56630265		Hood Lens
5	56649604		Wire Nut
6	56630680		Headlight Socket Assy
7	56649412		Shield
8	56649533		Screw (10 pack)
9	56703625		Nut (10 pack)
10	56703431		Motor Mtg Screw (10 pack)
11	56630950		Air Inlet Duct Assy (RH) (includes #12)
12	56630809		Foam Tape
13	56649652		Motor Seal Gasket
14	56703430		Foot Pedal Spring (5 pack)
15	56703431		Adjustment Screw (10 pack)
16	56703432		Clamp & Screw Assy (6 pack)
17	56630606		Wheel Cover
18	56649524		Hood Spring (10 pack)
19	56703539		Strain Relief Bushing (10 pack)
20	56649602		Hood & Nameplate (includes #21)
21	56649451		Nameplate
22	56630917		Switch Nut
23	56649433		Switch
24	56630722		Lightbulb
25	56630914		Wire & Terminal Assy
26	56649533		Clip Screw (10 pack)
27	56649528		Cable Clamp (5 pack)
28	56703427		Motor Screw (10 pack)
29	56630949		Air Inlet Duct Assy (LH) (includes #30)
30	56630809		Foam Tape
31	56630395		Foot Pedal
32	56630668		Adapter Retainer Spring
33	56649533		Retainer Screw (10 pack)
34	56649551		Base Assy (includes #35-38)
35	56630399		Cam (RH)
36	56630400		Cam (LH)
37	56703451		Rivet-cam (10 pack)
38	56703452		Washer (10 pack)
39	56630606		Wheel Cover
40	56703589		Motor Assy Complete



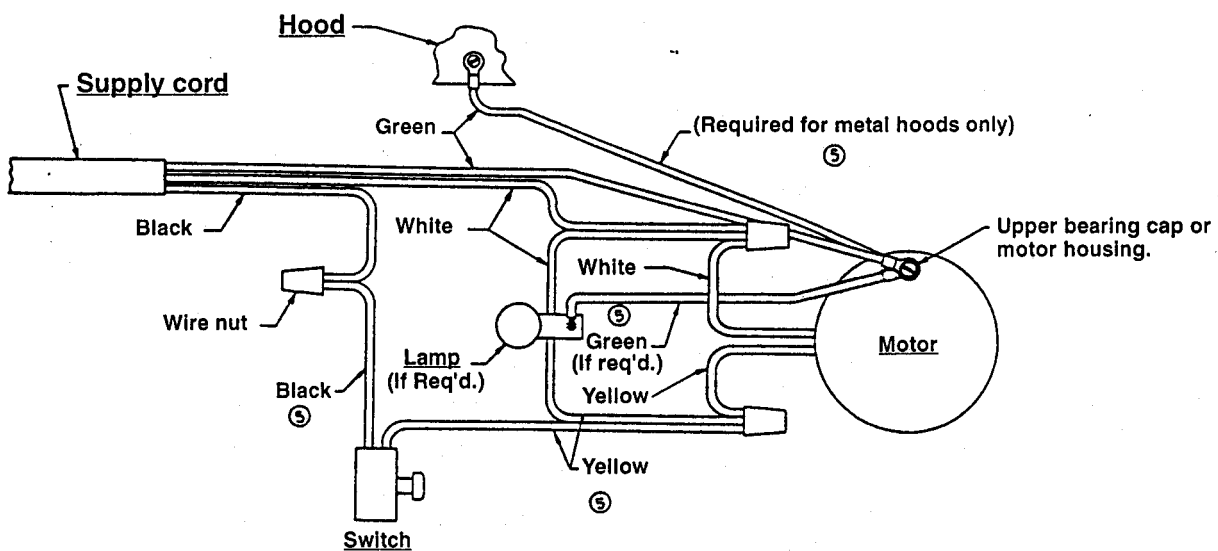
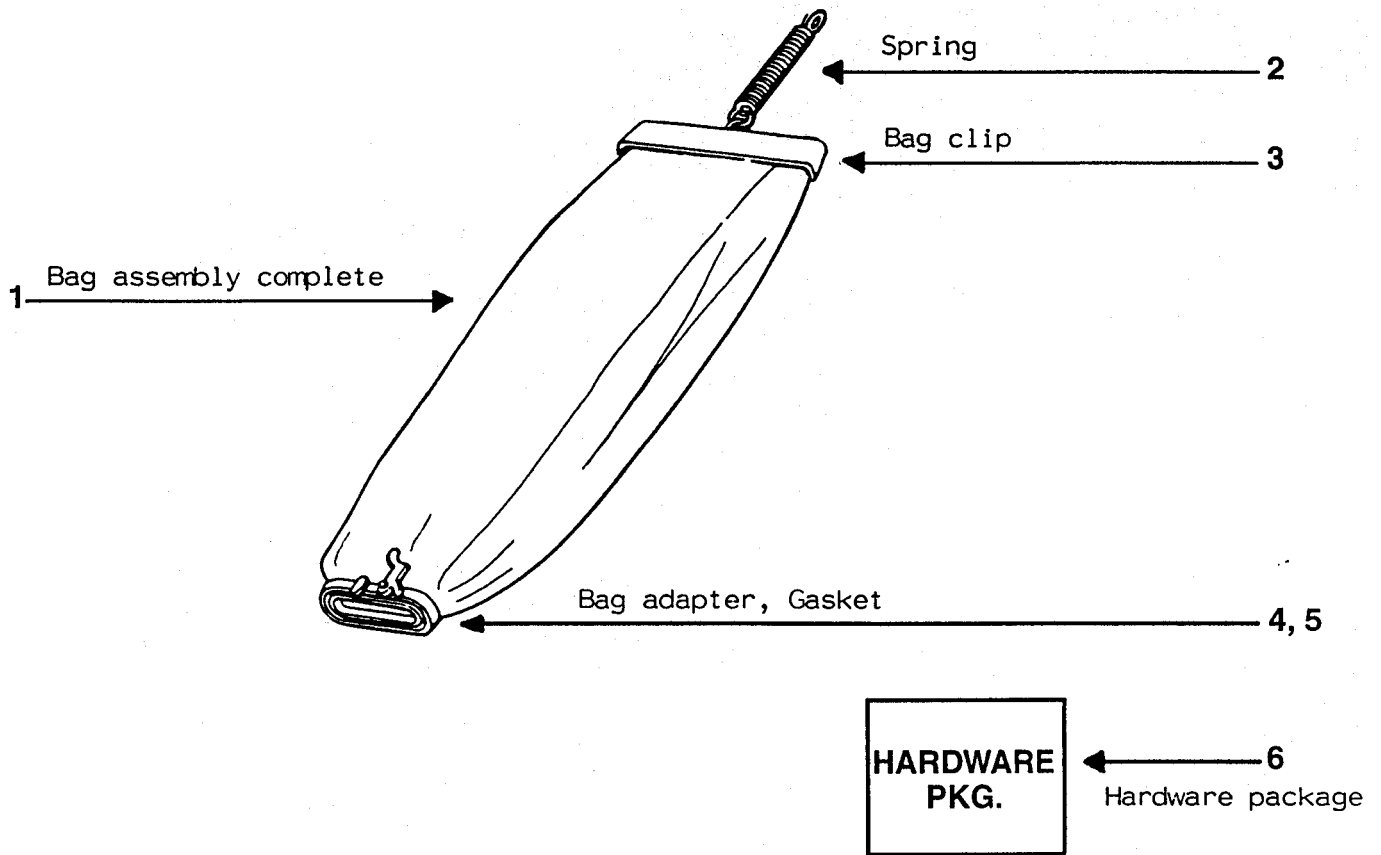
Item	Ref. No.	Qty	Description
1	56649420		Furniture Guard
2	56649525		Pushnut
3	56630500		Rear Wheel
4	56630671		Rear Axle
5	56703447		Screw (10 pack)
6	56630597		Front Axle
7	56649653		Belt
8	56703471		Bearing Retainer (2 pack)
9	56703460		Clipping (10 pack)
10	56630479		Shaft
11	56649479		Foam Tape
12	56649523		Wheel Washer (10 pack)
13	56703823		Axle Clamp (10 pack)
14	56703467		Axle Spring (6 pack)
15	56630592		Front Wheel
16	56703535		Disturbulator Assy (includes #8,9,17-22)
17	56630877		Bristle Strip Assy
18	56630307		Disturbulator Tube
19	56630865		Felt Washer
20	56630486		Disturbulator Cap
21	56630488		Cap Cover
22	56703458		Lock Nut (10 pack)
23	56630478		Bottom Plate Assy (includes #11)
24	56649603		Wheel / Axle Assy (includes #2-4, 12)



Item	Ref. No.	Qty	Description
1	56703589		Motor Assy Complete
2	56630375		Retainer Assy
3	56649651		Motor Brush Assy
4	56703603		Motor Cover
5	56630901		Armature Fan & Bearing Assy (includes #6, 7)
6	56649519		Bearing (5 pack)
7	56630560		Fan
8	56630895		Field Assy
9	56649480		Tie Fastener
10	56703485		Washer (10 pack)
11	56703486		Fan Washer (10 pack)
12	56630665		Pulley
13	56649527		Retainer Screw (10 pack)
14	56703625		Hex Nut (10 pack)
15	56703380		Lock Washer (10 pack)
16	56703392		Brush Screw
17	56703611		Motor Base Assy (includes #18-20)
18	56649552		Bearing Retainer
19	56649518		Bearing
20	56703484		Rivet (10 pack)
21	56703615		Orlo Thread Screw
22	56630273		Fan
23	56703486		Fan Washer (10 pack)



Item	Ref. No.	Qty	Description
1	56703490		Cord Retainer Set
2	56703492		Screw & Nut Assy
3	56630268		Lower Handle Tube
4	56703495		Supply Cord
5	56649533		Screw (10 pack)
6	56649449		Handle Socket Assy
7	56703497		Nut (10 pack)
8	56100032		Bolt (10 pack)
9	56649430		Handle Grip
10	56703491		Upper Handle Assy (includes #9)
11	56703492		Screw & Nut Assy (6 pack)
12	56649536		Screw (10 pack)
13	56630623		Handle Socket Shield



Item	Ref. No.	Qty	Description
1	56703511		Bag Assy Complete
2	56630761		Spring
3	56649424		Bag Clip
4	56630415		Bag Adapter
5	56630773		Gasket
6	56649482		Hardware Package
**	141045100		Zipper Bag
**	141216900		Paper Bags (9 pack)

** = Optional (not included)



**KENT/
Euroclean**
Working For A Cleaner World

Kent/Euroclean
14600 21st Avenue North
Plymouth, MN, 55447-3408
www.eurocleanusa.com
Phone: 800-334-1083
Fax: 866-261-4779