

Dimension

Models U5215-930, U5221-930, U5223-930, U5223-940*, U5227-930, U5239-930

| Ref. No. | Part No. | Description | Ref. No. | Part No. | Description |
|----------|---|--|----------|----------|--|
| 1 | 48663204 | Upper Handle Assembly - ABE (Incl. items 2,3,4) | 46 | 43576142 | Motor Assembly Comp. -(P-202) |
| 2 | 37911078 | Handle Cap - ABE | 47 | 36131090 | Motor Retainer Cap -L.H.- ABE |
| 3 | N/A | Switch Rod - Upper | 48 | 21447217 | * Screw - Self Tapping - AY (5) |
| 4 | N/A | Switch Button | 49 | 51669066 | + Hood Nameplate (19.5) |
| 5 | 46388027 | Attachment Cord Assem. AG 35 ft. - | | 51669070 | Hood Nameplate (20.0) |
| 6 | 4010100Z | Throw-Away Bag (3 Pk.) | | 51669075 | Hood Nameplate - U5239-930 |
| 7 | 37257147 | Tool Door- AAN | 50 | 39383097 | + Dirt Finder Lens BZ |
| 8 | 36433125 | Tool Holder- ABE | 51 | 42252298 | Hood Assembly-ABM- U5215-930 |
| 9 | 38355008 | Spring | | 42252292 | Hood Assembly - ABB -U5221-930 |
| 10 | 36151013 | Bag Door Latch - ABE | | 42252229 | Hood Assembly - AAY- U5223-930 |
| 11 | 37255021 | Hard Bag - ABE | | 42252364 | Hood Assembly - ABR- U5227-930 |
| 12 | 38458046 | Switch Rod Lever | | 42252A04 | Hood Assembly - AG - U5239-930 |
| 13 | 39464025 | Lower Handle - ABE | 52 | 37257175 | Air Intake Door Assembly - ABE |
| 14 | 40201085 | Handle Hardware Assembly | 53 | 38351011 | Spring |
| 15 | 38634078 | Extension Tube | 54 | 38784056 | + Seal - AG |
| 16 | 43414146 | Dusting Brush Assembly - ABR | 55 | 21362006 | * Speed Nut |
| 17 | 43434024 | Hose Comp. - AB)(/AG | 56 | 38613029 | Air Intake - AG |
| 18 | 32286025 | Hose Adapter - Long - AG | 57 | 51151004 | Indicator Flag - BZ U5221-930, U5223-930, U5227-930 |
| 19 | 32377005 | Hose Connector - AG | 58 | 38733002 | Bag Check Diaphragm - U5221-930, U5223-930, U5227-930 |
| 20 | 38614036 | Furniture Nozzle - ABR | | | |
| 21 | 38617026 | Crevice Tool - ABR | | | |
| 22 | 36433113 | Lower Hose Support - ABE | | | |
| 23 | 36425081 | Bag Housing Bracket-ABE | | | |
| 24 | Note: All Bag Housing Doors include items 9 & 10 | | | | |
| | 37257243 | Bag Housing Door - ABM - U5215-930 | | 21447220 | * Screw (Tool Holder) |
| | 37257212 | Bag Housing Door ABB- U5221-930 | | | |
| | 37257213 | Bag Housing Door AAY- U5223-930 | | | |
| | 37257214 | + Bag Housing Door ABR- U5227-930 | | | |
| | 37257242 | Bag Housing Door AG - U5239-930 | | | |
| 25 | 38784016 | Seal - AG | | | |
| 26 | 38458022 | Handle Release Lever - AG | | | |
| 27 | 38567014 | Indicator Knob - U5215-930 | | | |
| | | U5221-930, U5223-930, U5239-930 | | | |
| | 38567025 | Indicator Knob - ABR - U5227-930 | | | |
| 28 | 38567009 | Cam Actuator-AG | | | |
| 29 | 31523012 | Wheel Shaft - AG (2) | | | |
| 30 | 38522011 | Wheel - Rear-AG (2) | | | |
| 31 | 42242266 | Main Body Assem. - AG (Incl. items 26,29,30,44) | | | |
| | | Cam Actuator Spring - FW | | | |
| 32 | 34572002 | Valve Gate - BZ | | | |
| 33 | 38718005 | * Wheel Retainer- AG (2) | | 56511A07 | Owners Manual |
| 34 | 36131056 | Wheel - AG - (2) | | 58185184 | Carton - Common |
| 35 | 38521023 | Front Wheel Assembly | | 58369067 | + Cleaner Support |
| | 43248059 | Wheel Support-ABE | | 58366099 | Hard Bag Support |
| 36 | 36432055 | Front Wheel Assembly | | | |
| | 43248059 | Bottom Plate - AG | | | |
| 37 | 37245108 | Belt | | | |
| 38 | 38528027 | Agitator Assembly Complete - AG (P -204) | | | |
| 39 | 48414081 | Wheel Shaft - AY | | | |
| 40 | 32563012 | + Lever - (Use wheel assem. 43248059) | | | |
| 41 | 38452089 | Nozzle Height Adv. Cam - BZ | | | |
| 42 | 38563013 | Spring - FW | | | |
| 43 | 38351012 | * Rug Nozzle Rib Shoe | | | |
| 44 | 13261AY | Dirt Finder Lamp | | | |
| 45 | 27313101 | | | | |

ITEMS NOT ILLUSTRATED

21447220 * Screw (Tool Holder)

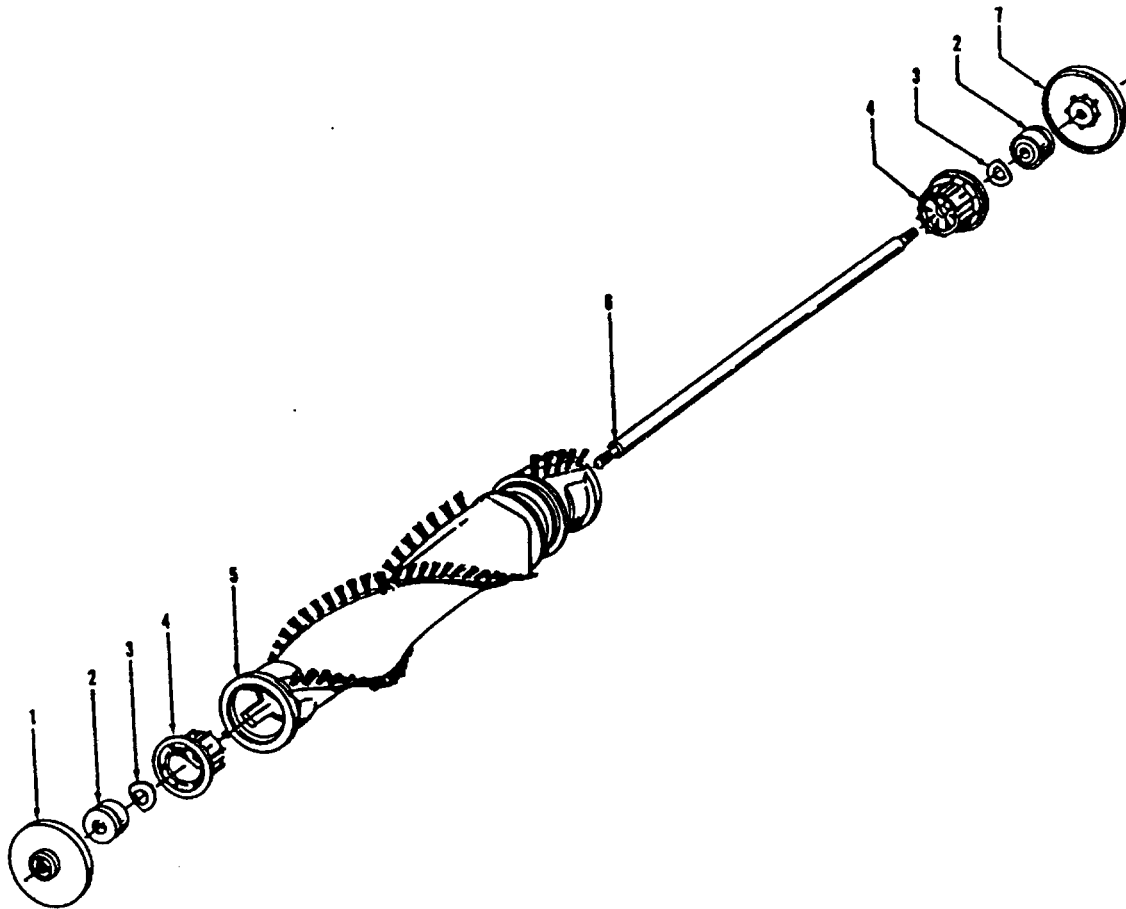
PACKAGING MATERIAL

56511A07 Owners Manual
58185184 Carton - Common
58369067 + Cleaner Support
58366099 Hard Bag Support

* Model U5223-940 is identical to the U5223-930 except for the addition of seven microfiltration bags.

Agitator - 48414081
 Agitator - 48414075

Elite/ Elite II/ Dimension/ Legacy/ TurboPOWER/ Caddy Vac - Four Brush
 Caddy Vac - Four Brush



| Ref. No. | Part No. | Description |
|----------|----------|---|
| | 48414081 | Agitator Assem. Complete (Natural Bristles) |
| | 48414075 | Agitator Assem. Complete (Blue Bristles) |
| 1 | 36423016 | Thread Guard - RH |
| 2 | 43267002 | Agitator Bearing Assem. (2) |
| 3 | 21347003 | Conical Washer (2) |
| 4 | 36422022 | Agitator End (2) |
| 5 | N/A | Agitator Body |
| 6 | 32724013 | + Agitator Shaft |
| 7 | 36423017 | Thread Guard - LH - AG |



| Ref. No. | Part No. | Description |
|----------|----------|--|
| | 43576142 | Motor Assem. Comp. |
| | 43576181 | + Motor Assem. Comp. (Replaced by 43576204) |
| 1 | 214793DA | Screw-Self Tapping (4) |
| 2 | 38736033 | Fan Chamber |
| 3 | 38755030 | Fan |
| 4 | N/A | Rivet - Semi Tubular (2) |
| 5 | N/A | Motor Housing Assem. |
| 6 | N/A | Motor Brush Holder (2) |
| 7 | N/A | Motor Brush Assem. (2) |
| 8 | N/A | Bearing |
| 9 | N/A | Bearing Retainer |
| 10 | 36914004 | Switch Bus Bar |
| 11 | 39116005 | + Attachment Terminal |
| 12 | 28218043 | Switch Assem. - Early Models (Prior to 5/96) |
| | 28161062 | Switch Assem. - Late Models (After 5/96) |
| 13 | N/A | Armature/Bearing Assem. |
| 14 | 37194046 | Motor End Cap Assem. - MW |
| 15 | N/A | Field Assem. |
| 16 | N/A | Lamp Holder Assem. |
| 17 | 21312793 | * Washer |
| 18 | 38783020 | Duct Seal |
| 19 | 41311016 | Motor Brush Holder Assem. |

ITEMS NOT ILLUSTRATED

- 38781013 + Duct Seal (8 1/2" Long adhesive backed foam seal used on early models in place of item 18)
- 54821001 Tape (Roll)