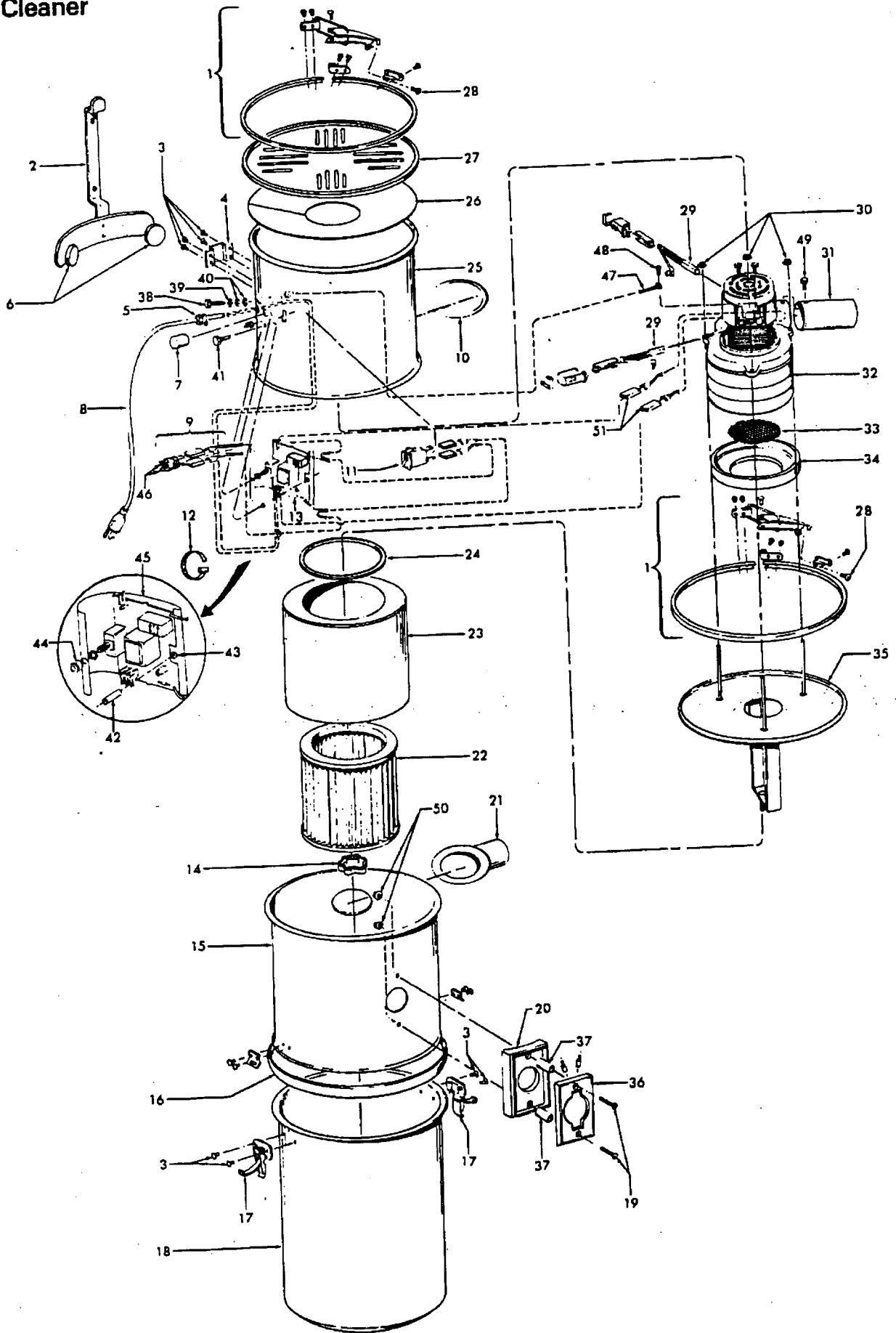


# CVS Cleaner

Models S5567-011, S5569-011



Ref. No.	Part No.	Description
1	41129031	Clamp Ring Assm. (2)
2	41947011	Wall Mount Bracket
3	12647EF	+ Rivet (8)
4	34712003	Bracket
5	39049	Strain Relief
6	31113011	+ Pad (2)
7	23762511	Low Voltage Cap
8	46543024	Cord
9	27724050	+ Terminal Bushing
10	38783013	Grommet
11	28162014	Switch Assm.
12	27479307	* Wire Tie
13	27135008	Trans/Relay/Breaker PCB
14	23718206	Filter Retaining Knob
15	43611034	Filter Enclosure Assm.
16	38784069	Can Gasket
17	23715191	Can Latch (2)
18	43641008	Dust Container Assm. (w/Latches) - S5567-011
	43641009	Dust Container Assm. (w/Latches) - S5569-011
19	21774007	+* Screw (2)
20	35143001	+ Bezel - AAP
21	25435010	Intake Port
22	38763006	Filter
23	37191018	Deflector
24	38783011	+ Deflector Gasket
25	42192067	Motor Enclosure Assm. - S5567-011
	42192071	Motor Enclosure Assm. - S5569-011
26	38763018	Air Baffle - S5567-011
	38763019	+ Air Baffle - S5569-011
27	42228003	Top Cover Assm.
28	160508	+ Self Tapping Screw (2)

Ref. No.	Part No.	Description
29	27292001	Carbon Brush (2) - S5567-011 (Fit Lamb Motors Only)
	27292002	Carbon Brush (2) - S5569-011 (Fit Lamb Motors Only)
30	21372203	+ Speed Nut (3)
31	31744024	Exhaust Port
32	43577005	Motor Assm. - S5567-011
	43577014	Motor Assm. - S5569-011
33	38763005	Motor Screen
34	38784050	Gasket
35	41427027	+ Motor Filter Mount Assm.
36	43526001	Inlet Valve
37	31742008	Spacer (2)
38	N/A	* Screw
39	14856	+* Lockwasher
40	15854EF	* Hex Nut (2)
41	21416010	+* Screw
42	31733006	Spacer
43	37351	+* Expansion Nut
44	31324001	Spacer
45	34227012	+ PCB. Barrier
46	162133	+* Terminal (2)
47	46155016	+ Lead Wire Green
48	36695	+ Screw
49	21447216	+* Screw
50	21852107	Lock Nut
51	162130	+* Insulating Pod (3)

PACKAGING MATERIAL

58158005	+ Carton - S5567-011
58158006	+ Carton - S5569-011
56513299	+ Owners Manual
58254007	+ Carton Liner
58262004	+ Bottom Support