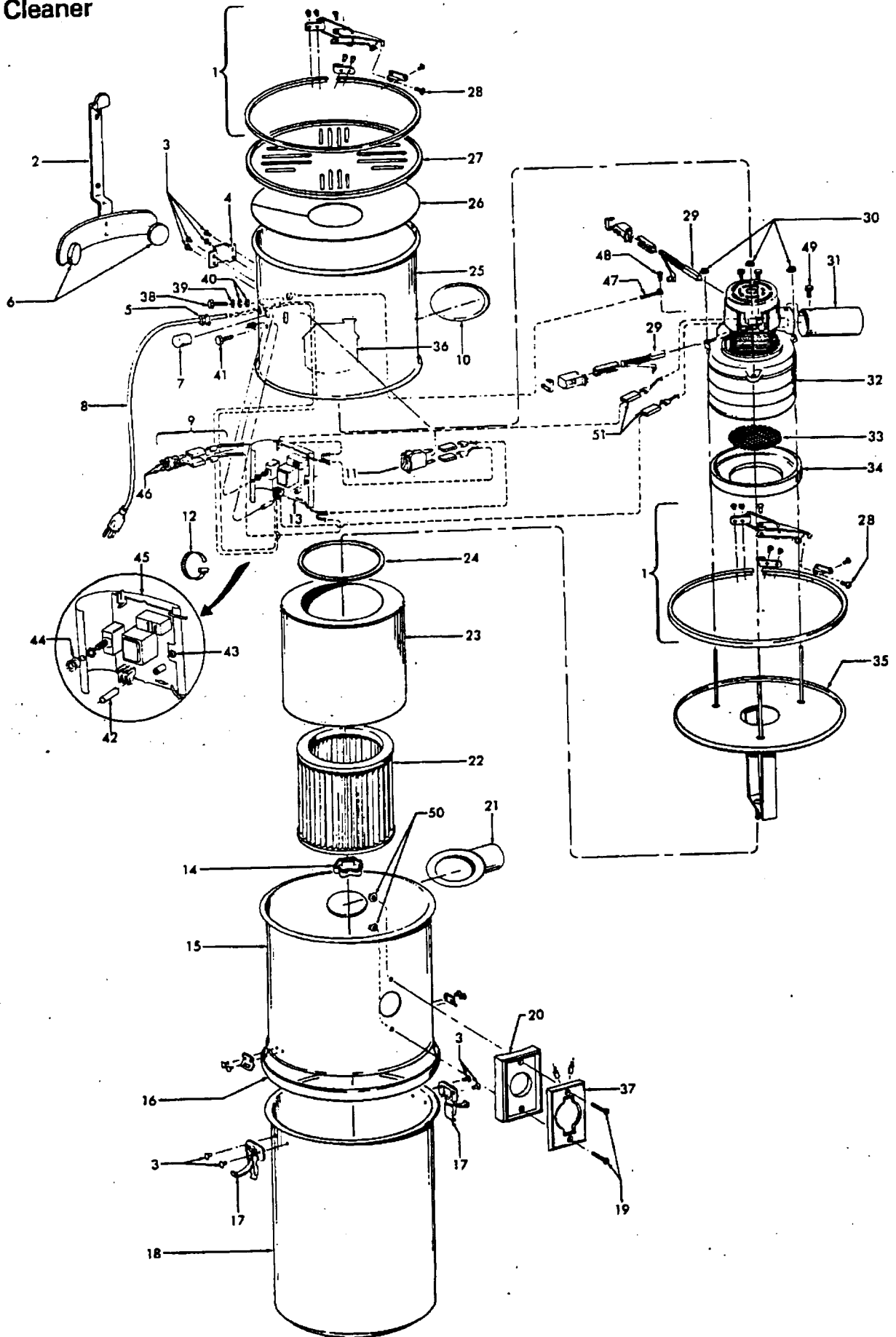


CVS Cleaner



Ref. No.	Part No.	Description
1	41129033	Clamp Ring Assm. (2)
2	41947011	Wall Mount Bracket
3	12647EF	+ Rivet (8)
4	34712003	Bracket
5	39049	Strain Relief
6	31113011	+ Pad (2)
7	23762511	Low Voltage Cap
8	46543025	Cord
9	27724050	+ Terminal Bushing
10	38783013	Grommet
11	28162014	Switch Assm.
12	27479307	* Wire Tie
13	27135008	Trans/Relay/Breaker PCB
14	23718206	Filter Retaining Knob
15	43611032	Filter Enclosure Assm.
16	38784046	Can Gasket
17	23715191	Can Latch (2)
18	43641007	+ Dust Container Assm. (w/Latches)
19	21774007	+* Screw (2)
20	35143001	+ Bezel - AG
21	25435010	Intake Port
22	38763006	Filter
23	37191018	Deflector
24	38783011	+ Deflector Gasket
25	42192070	Motor Enclosure Assm.
26	38763017	Air Baffle
27	42228004	+ Top Cover Assm.
28	21427255	+* Self Tapping Screw (2)
29	27292002	Carbon Brush (2) (Fit Lamb Motor Only)

Ref. No.	Part No.	Description
30	21372203	+ Speed Nut (3)
31	31745011	Exhaust Tube
32	43577014	Motor Assm.
33	38763005	Motor Screen
34	38784050	Gasket
35	41427035	+ Motor Filter Mount Assm.
36	52141008	+ Nameplate
37	43526001	Inlet Valve
38	21583005	+ Screw
39	14856	+* Lockwasher
40	15854EF	* Hex Nut (2)
41	21416010	+* Screw
42	31733006	Spacer
43	37351	+* Expansion Nut
44	31324001	Spacer
45	34227012	+ PCB. Barrier
46	162133	+* Terminal (2)
47	46155016	+ Lead Wire Green
48	36695	+ Screw
49	21447216	+* Screw
50	21852107	Lock Nut
51	162130	+* Insulating Pod (3)

PACKAGING MATERIAL

58168016	Carton
56513299	+ Owners Manual
58254006	+ Carton Liner
58254008	+ Bottom Support