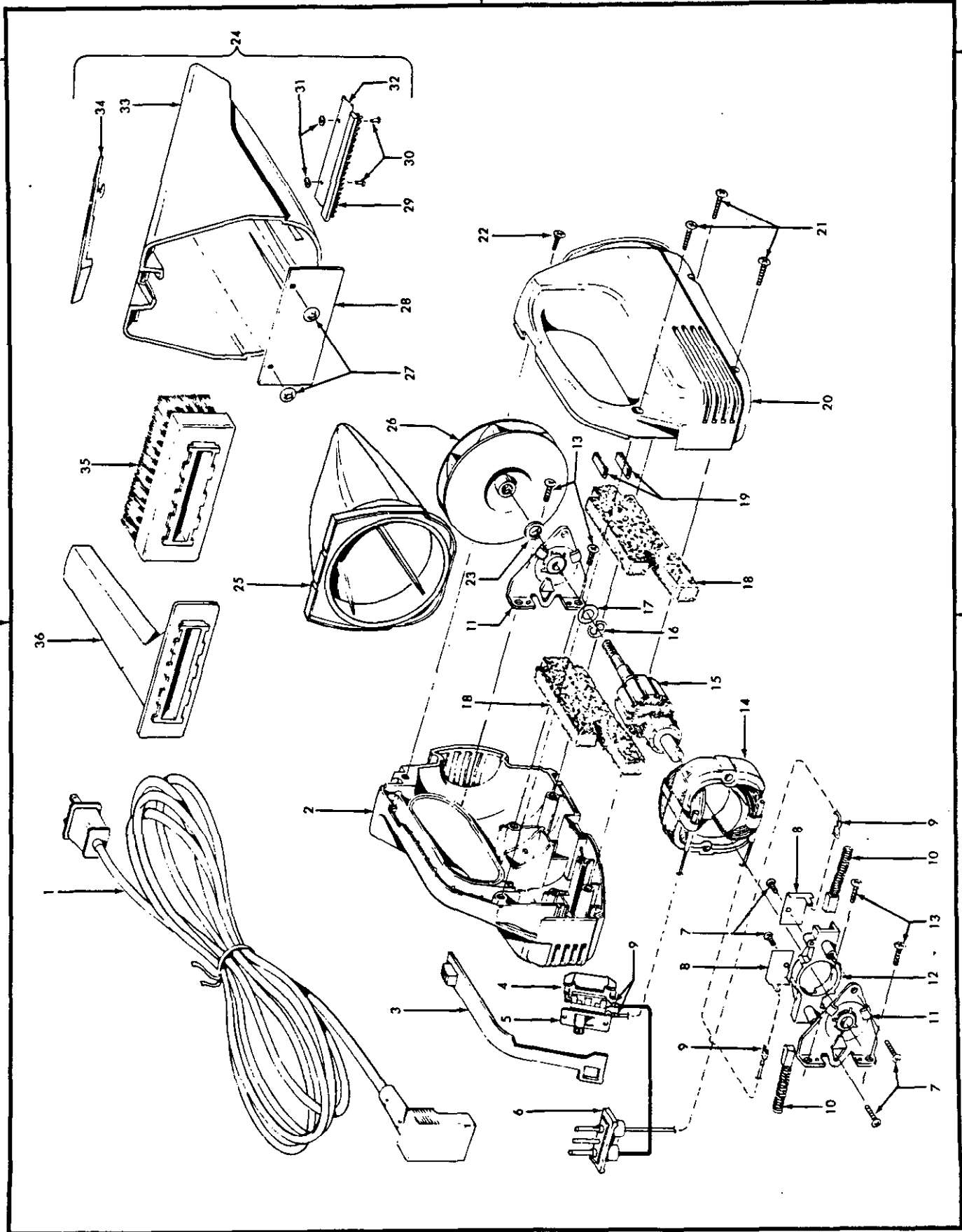


Hand Held Cleaner

Models S1057-600, S1057-800,
S1059-600, S1071-800



Hand Held Cleaner

Models S1057-600, S1057-800, S1059-600, S1071-800, S1071-810

Ref. No.	Part No.	Description	Ref. No.	Part No.	Description
1	46388003	Attachment Cord - JM	18	34284003	Exhaust Filter (2)
	46363291	Attachment Cord - JM - S1059-600, S1071-800	19	36222018	Bumper (2)
	46363019	Attachment Cord - AAP - S1071-810	20	37223156	Housing - RH - MR
2	37223188	Housing - LH - MR		37223154	Housing - RH - MR - S1057-800
	37223187	Housing - LH - HR - S1057-800	21	21447122	+* Screw - Self Tapping (3)
3	38452057	Switch Actuator - AG	22	21447105	Screw - Self Tapping - EF
4	37258082	Terminal Shield	23	160030	* Washer
5	281770KD	Switch	24	43645024	Dust Cup Assm.
6	47116010	Terminal Plate - AG - S1057-600, S1057-800	25	43615051	Filter Assm.
7	21447028	* Screw - Self Tapping (4)	26	43565004	Fan Assm. - BZ
8	34561001	Connector Strip (2)	27	14092	* Retainer (2)
9	27666702	* Terminal (4)	28	34145005	Valve
10	47311007	Motor Brush & Spring Assm. (2)	29	N/A	Litter Picker - DS (Order Item 24)
11	43265005	Motor Bracket & Bearing Assm. (2)	30	N/A	Rivet - Semi-Tubular (2) (Order Item 24)
12	36315001	Motor Brush Holder - BZ	31	N/A	Washer (2) (Order Item 24)
13	21479431	Screw - Self Tapping - EF (4)	32	N/A	Retainer - AY (Order Item 24)
14	45314008	Field Assm. Comp.	33	N/A	Dust Cup (Order Item 24)
15	44731028	Armature & Fan Assm. (I incl. Items 1 1, 1 6,17,23,26)	34	N/A	Latch - AG (Order Item 24)
16	24735004	* Lock Ring	35	48451001	Dusting Brush Assm. - AG
17	21312776	Washer	36	38617009	Crevice Tool - AG
				56512103	+ Owner Manual - S1059-600, S1071-800
				58369051	+ Carton - S1059-600, S1071-800