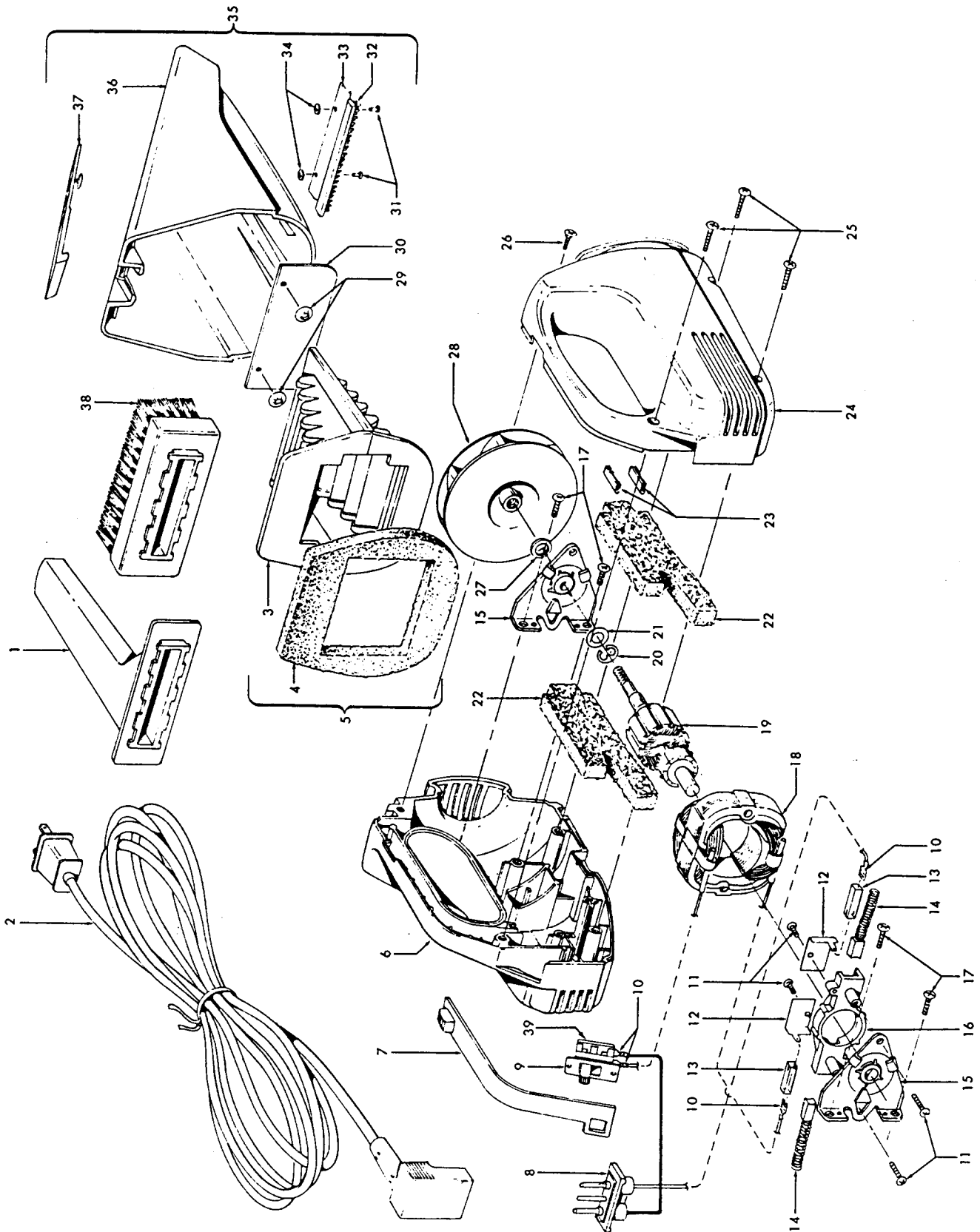


# Hand Held Cleaner

Models S1057-300, S1057-400, S1057-700,  
S1059



**Hand Held Cleaner**

**Models S1057-300, S1057-400, S1057-700, S1059**

Ref.	Part Description	No.	No.	Ref.	Part Description	No.	No.
1	38617009		Crevice Tool - AG	21	21312776	+	Washer
2	46388004		Attach. Cord - AG - 24'	22	34284003	+	Exhaust Filter (2)
3	N/A		Filter (Order Item 5)	23	36222018		Bumper (2)
4	N/A		Gasket (Order Item 5)	24	37223115		Housing - RH - MK
5	43615051		Gasket & Filter Assm.		37223116		Housing - RH - M - S1057-300
6	37223120		Housing - LH - MK		37223153		Housing - RH - MU - S1057-700
	37223121		Housing - LH - M - S1057-300	25	21447122	+	* Screw - Self Tapping (3)
	37223135	+	Housing - LH - MU - S1057-700	26	21447105	+	Screw - Self Tapping - EF
7	38452057		Switch Actuator - AG	27	160030	*	Washer
8	47116001		Terminal Plate - AG (Use w/28177009 Switch)	28	43565004	+	Fan Assm. - BZ
	47116010		Terminal Plate (Use w/281770KD Switch)	29	14092	+	* Retainer (2)
				30	34145005	+	Valve
9	28177009		Switch (w/Side Attach.)	31	N/A		Rivet - Semi - Tubular (2) (Order Item 35)
	281770		Switch (w/Rear Attach.)	32	N/A		Litter Picker - DS (Order Item 35)
10	163054		Terminal (4) Use w/28177009 Switch	33	N/A		Retainer - AY (Order Item 35)
	27666702	*	Terminal (4) Use w/281770KD Switch	34	N/A		Washer (2) (Order Item 35)
11	21447028	+	Screw - Self Tapping (4)	35	43645009	+	Dust Cup Assm. - M
12	34561001		Connector Strip (2)		43645024		Dust Cup Assm. - MU (Inc. item 5)
13	27464208	+	Insulating Pod (2)	36	N/A		Dust Cup - MK (Order Item 35)
14	47311007	+	Motor Brush & Spring Assm. (2)		N/A		Dust Cup - M - S1057-300 (Order Item 35)
15	43265005		Motor Bracket & Bearing Assm. (2)	37	N/A		Latch - AG (Order Item 35)
16	36315001		Motor Brush Holder - BZ	38	48451001		Dusting Brush Assm. - AG
17	21447003	*	Screw - Self Tapping - EF (4)	39	37258082		Terminal Shield (Use w/281770KD Switch)
18	45314007		Field Assm. Comp. (Use w/28177009 Switch)		58151016	+	Carton - S1059
	45314008		Field Assm. Comp. (Use w/281770KD Switch)				
19	44731028		Armature & Fan Assm. (Incl. Items, 15, 20, 21, 27, 28)				
20	13730	*	Lock Ring				
	24735004	*	Lock Ring - S1057-700				