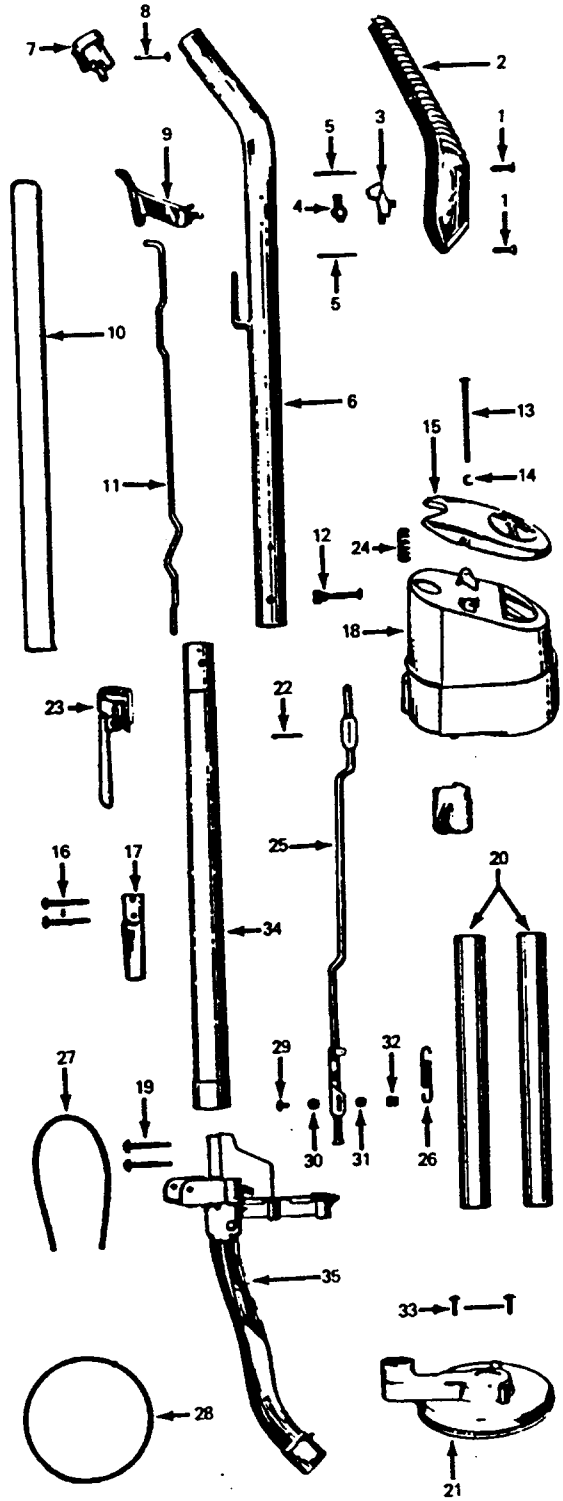
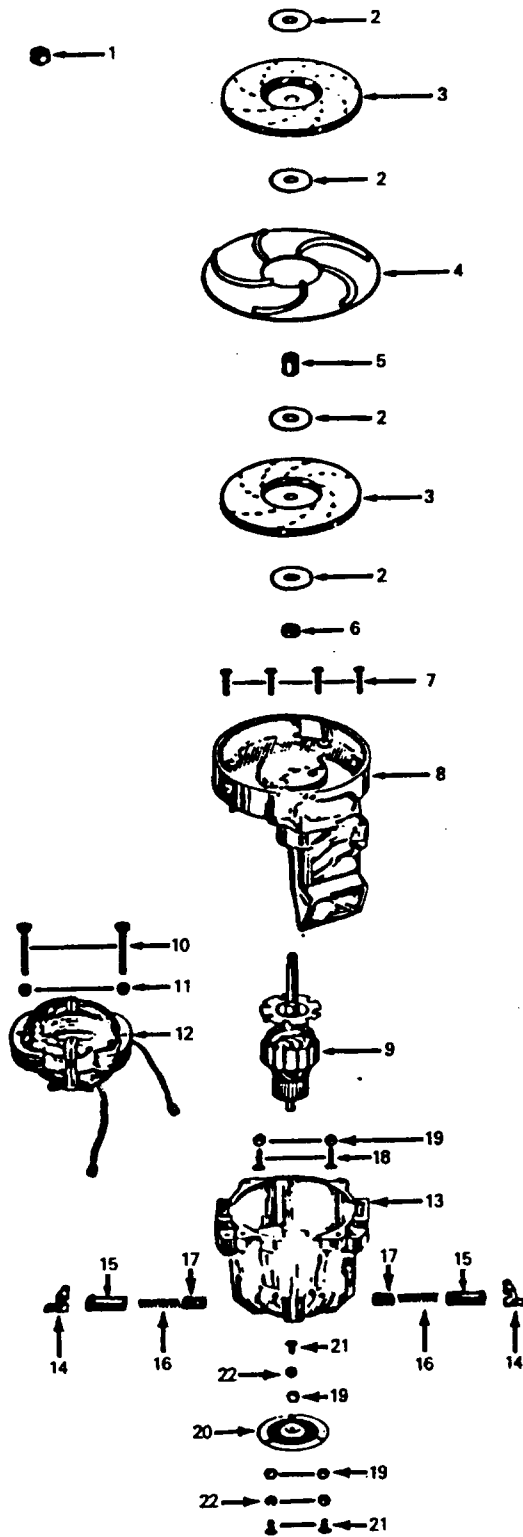


Handle

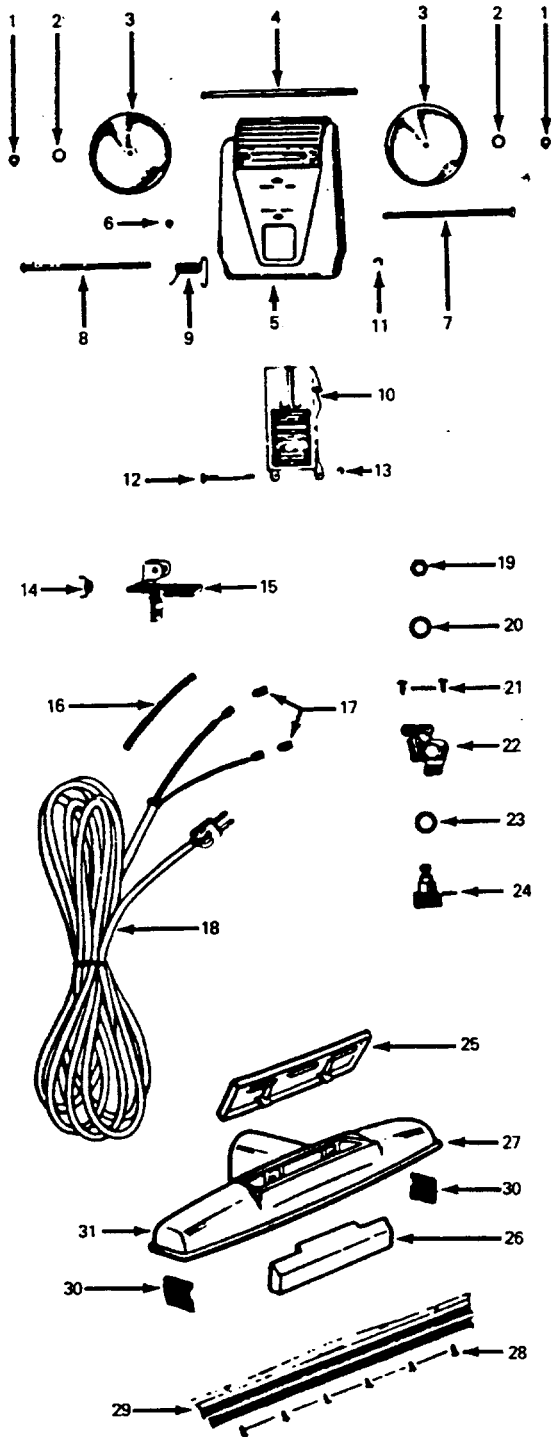
Models 3500, 3510



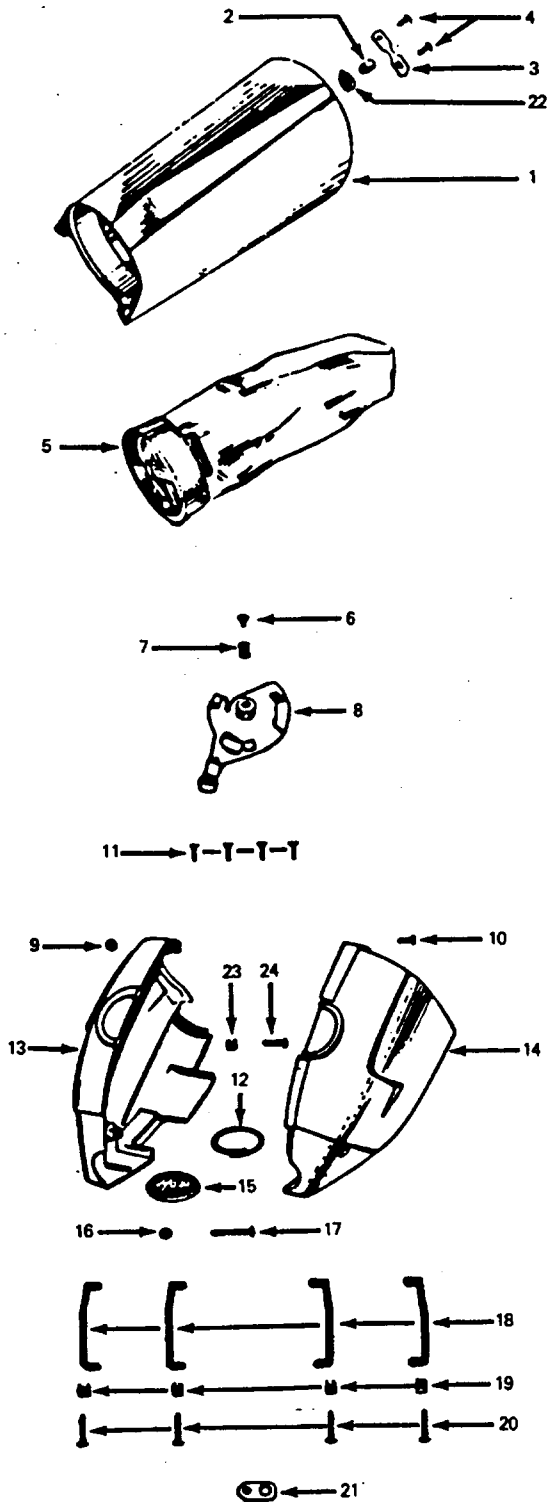
| Ref. No. | Part No. | Description |
|----------|----------|---|
| 1 | 48851 | +* Screw |
| 2 | 11786 | + Control Housing |
| 3 | 35136D | + Handle Control Release |
| 4 | 35224 | +* Spring |
| 5 | 48749 | +* Pin |
| 6 | 35230A | + Handle - Upper Half |
| 7 | 23161R | + Handle Knob |
| 8 | 48750 | +* Pin |
| 9 | 23166 | + Control Lever Assem. - 351 0 |
| | 35227 | + Control Lever Assem. - 3500 |
| 10 | 48748 | + Cord Insulator - Upper |
| 11 | 35153 | + Valve Rod - Upper |
| 12 | 48294AW | Handle Bolt & Nut |
| 13 | 48742 | + Air Valve Shaft |
| 14 | 48123AV | +* Ring |
| 15 | 35212R | + Air Valve |
| 16 | 12416 | +* Screw - Self Tapping |
| 17 | 34485JM | + Cord Storage Clip |
| 18 | 35218R | + Separator Assem. |
| 19 | 49264 | +* Screw - Self Tapping - 351 0 |
| 20 | 48753 | + Separator Tube |
| 21 | 35228 | + Fan Housing |
| 22 | 48714 | +* Pin |
| 23 | 48903 | + Handle Plug Assem. |
| 24 | 48409FW | Spring |
| 25 | 11911 | + Rod & Depressor Assem. |
| 26 | 12984AY | Spring |
| 27 | 49001 | + Gasket - Motor End Cap |
| 28 | 48817 | + Fan Housing Gasket |
| 29 | 48985 | +* Screw |
| 30 | 13006 | +* Washer |
| 31 | 14062 | +* Lock Washer |
| 32 | 13015EF | +* Nut |
| 33 | 48813 | +* Screw |
| 34 | 48830A | + Handle - Lower Half - 3510 |
| 35 | 49135 | + Motor Housing End Cap & Tube Assem. - 351 0 |
| | 11910Y | + Motor Housing End Cap Assem. |



| Ref. No. | Part No. | Description |
|----------|----------|--------------------------|
| 1 | 11762 | + Motor Assem. Comp. |
| 2 | 18757 | +* Nut |
| 3 | 48771 | +* Washer |
| 4 | 35144 | + Fan Assem. |
| 5 | 35138A | + Deflector |
| 6 | 48726 | + Fan Spacer |
| 7 | 162233 | + Fan Spacer |
| 8 | 49040 | +* Screw |
| 9 | 35135A | + Motor End Plate Assem. |
| 10 | 11743 | + Armature Assem. |
| 11 | 48724 | +* Screw |
| 12 | 13015EF | +* Nut |
| 13 | 23183 | + Field Assem. |
| 14 | 11745 | + Motor Casing |
| 15 | 35223 | + Motor Brush Retainer |
| 16 | 48723 | + Motor Brush Holder |
| 17 | 49179 | +* Spring |
| 18 | 36314005 | + Motor Brush |
| 19 | 48773 | +* Screw |
| 20 | 18154 | +* Nut |
| 21 | 15856 | + Motor Bearing |
| 22 | 21765159 | Screw |
| | 19772 | Lock Washer |



| Ref. No. | Part No. | Description |
|----------|----------|--------------------------|
| 1 | 48839 | +* Retainer |
| 2 | 48840 | +* Washer |
| 3 | 35134AG | + Carrier Wheel |
| 4 | 48716 | + Carrier Wheel Shaft |
| 5 | 35217 | + Wheel Carriage Assem. |
| 6 | 48804 | +* Washer |
| 7 | 48732 | + Wheel Latch Lock Shaft |
| 8 | 48727 | + Wheel Carriage Shaft |
| 9 | 35219 | + Wheel Carriage Spring |
| 10 | 35191A | + Wheel Latch Assem. |
| 11 | 13271 | +* Ring |
| 12 | 48728 | +* Pin |
| 13 | 48123AV | + Ring |
| 14 | 35220 | +* Spring |
| 15 | 35331 | + Switch Lever Assem. |
| 16 | 49167 | + Insulator |
| 17 | 160356 | * Terminals |
| 18 | 46363195 | Cord |
| 19 | 12626 | +* Ring |
| 20 | 48855 | +* Washer |
| 21 | 48963 | + Screw |
| 22 | 35197 | + Switch Bracket |
| 23 | 48737 | +* Gasket |
| 24 | 35200 | + Switch |
| 25 | 23328A | + Nozzle Cap |
| 26 | 35330 | + Nozzle Cake |
| 27 | 12411A | + Nozzle - 3500, 3510 |
| 28 | 48812 | +* Screw |
| 29 | 12405 | + Brush Assem. - 3510 |
| | 35210 | + Brush Assem. - 3500 |
| 30 | 12407 | +* Shim - 3510 |
| 31 | 12410A | + Nozzle Assem. |



| Ref. No. | Part No. | Description |
|----------|----------|-------------------------------|
| 1 | 23242R | + Tank & Handle Assem. |
| 2 | 35215T | + Tank Valve |
| 3 | 35148 | + Valve Closure Spring |
| 4 | 19254 | +* Screw - Self Tapping |
| 5 | 35259 | + Bag Assem. |
| 6 | 21571701 | +* Screw |
| 7 | 48846 | +* Spring - Compression |
| 8 | 35221 | + Tank Latch Assem. |
| | 15854EF | * Nut - Special |
| 10 | 162114 | + Screw - Machine |
| 11 | 48813 | +* Screw - Machine |
| 12 | 49055 | +* Spring |
| 13 | 35332R | + Motor Housing & Gasket - RH |
| 14 | 35498R | + Motor Housing - LH |
| 15 | 35336 | + Medallion |
| 16 | 13015EF | +* Nut |
| 17 | 19747 | +* Screw - Machine |
| 18 | 35137A | + Motor Strap |
| 19 | 48815 | +* Nut |
| 20 | 45062 | +* Screw |
| 21 | 45517 | * Wire Holder |
| 22 | 48831 | +* Seal |
| 23 | 49181 | +* Nut |
| 24 | 46008 | +*Screw |