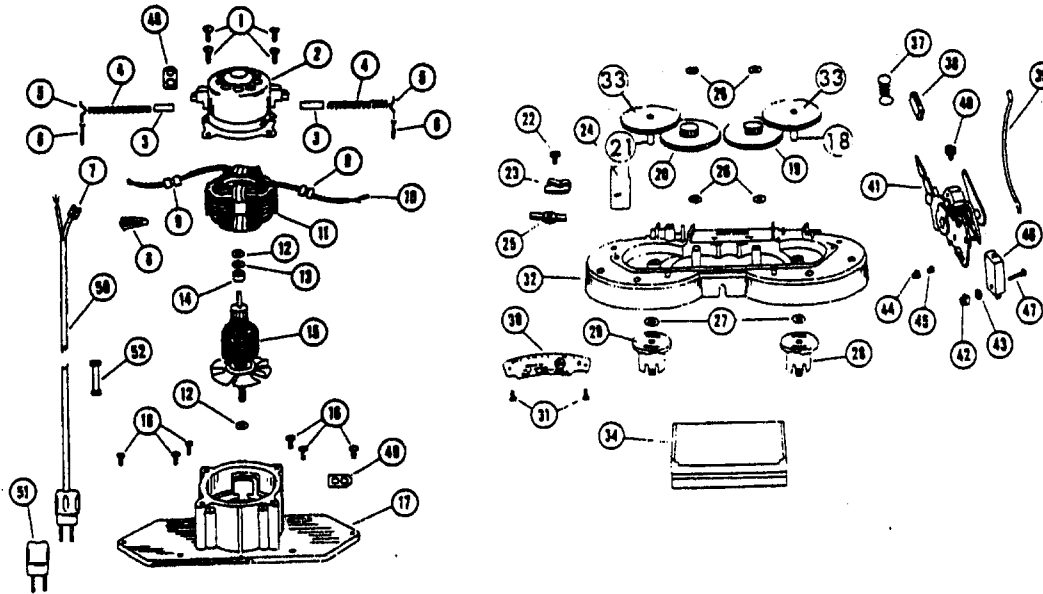


Motor & Housing

Models 5300, 5308, 5308-01, 5471, 5477
5479, 5480, 5488-01, 5498



Ref.	Part Description	No.	No.
1	17001FW	Screw	
2	42197002	Motor Cap Assem.	
3	49351	+ Motor Brush	
	14882	+ Motor Brush Assem. - 5479	
4	49423	+ Motor Brush Spring	
5	49397	+* Retainer	
6	49435	+* Pin	
7	160356	* Terminal	
8	48969	* Wire Nut	
9	49379	+ Lead Wire Collar	
10	14197	+* Terminal	
11	23444	Field Assem.	
	14793	+ Field Assem. - 5479	
12	21312720	* Washer	
13	15885	* Washer	
14	49344	+* Insulator	
15	23445	Armature	
	14794	+ Armature - 5479	
16	49417AZ	+* Screw	
17	12165	Gear Cover Assem.	
18	168404	+ Brush Gear & Shaft - L.H.	
19	35674	Idler Gear - L.H.	
20	35675BZ	Idler Gear - R.H.	
21	168405	Brush Gear & Shaft - R. H.	
22	14378	+* Screw	
23	12910	Cord Clamp	
24	14367	+ Cord Insulator	
25	49388AY	+ Bail Shaft - R.H.	
26	21312724	* Washer	
27	21312757	* Washer	
28	17308	Brush Carrier - L.H.	
29	17309	Brush Carrier - R.H.	
30	17256	+ Patent Plate - 5471	
	17824	+ Patent Plate - 5477	
	17751	+ Patent Plate - 5479	
	166104	+ Patent Plate - 5300	
	166060	+ Date Plate - 5480	

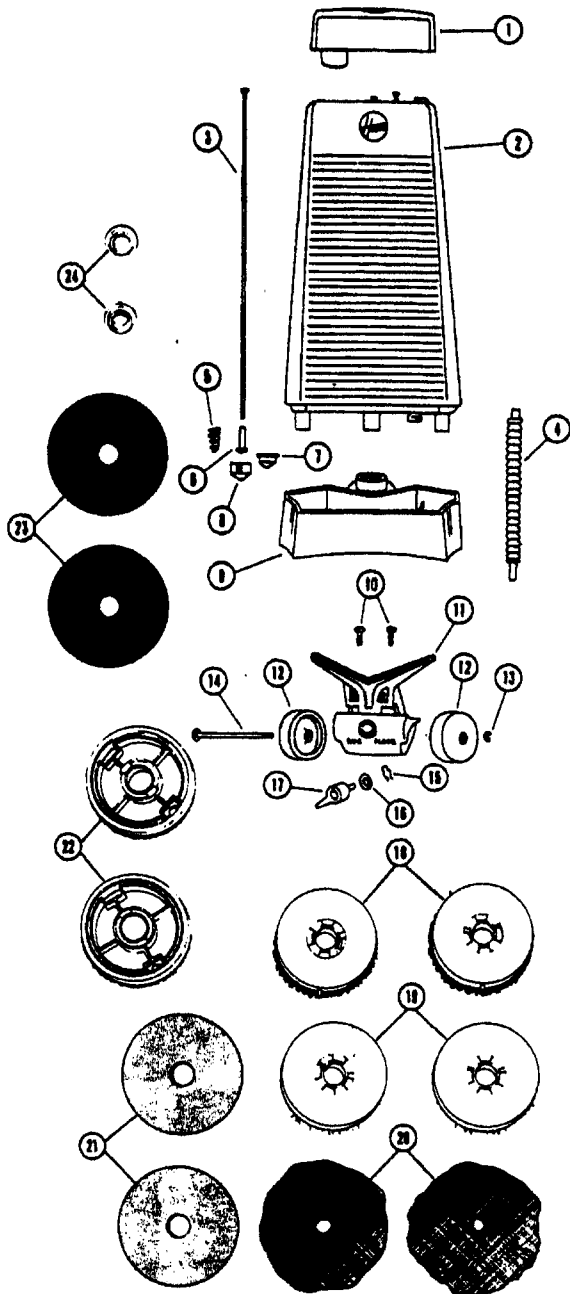
Ref.	Part Description	No.	No.
31	49508	+* Screw	
32	42273011	Gear Housing Comp.	
33	38541002	Brush Gear	
34	17074AG	+ Hood Adapter	
37	12891	Handle Control Lever Spring	
38	34207AG	Foot Pad	
39	12574	+ Lead Wire by Foot	
40	49429	+* Screw	
41	35676	+ Ball Mounting Bracket Assem. - 5471, 5477, 5479	
	165104	+ Ball Mounting Bracket w/Switch	
	43138001	+ Bail Mounting Bracket Only - 5308, 5480, 5488	
42	21388105	+* Nut - Special	
43	21312761	* Washer	
44	14377	+ Switch Insulator	
45	14360	+* Eyelet	
46	19512AH	Switch	
47	12892	* Screw - Machine	
48	13190	+* Lead Wire Holder	
49	45517	* Wire Holder	
50	14786T	+ Attach. Cord - 5479	
	46363338	Attach. Cord	
51	35380	Service Plug Assem.	
52	14504	+ Ball Socket Insulator	

ITEMS NOT ILLUSTRATED

160472	+ Insulating Pad - Switch - 5498
161737	+ Insulating Pad - Carbon Brush - 5498
12227	Connectors - 5498
166545	+ Bulb Socket Comp. - 5498
166641DL	+ Insulator Boot - Carbon Brush

Tank & Accessories

**Models 5300, 5308, 5308-01, 5471, 5477
5479, 5480, 5486, 5488, 5488-01, 5498**



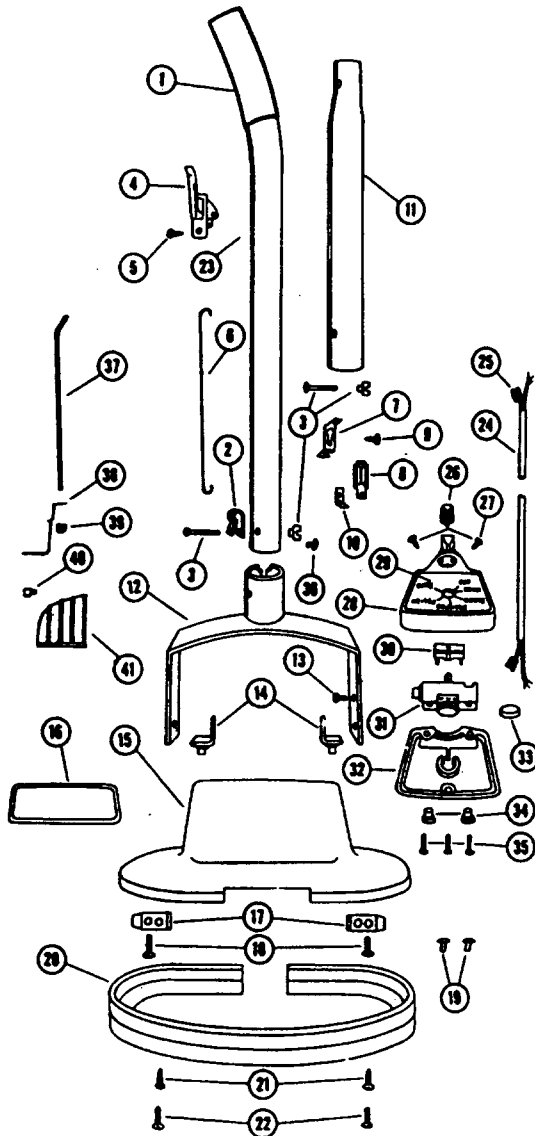
Ref.	Part Description	No.	No.
1	17084JM	Tank Cap	
2	43632028	Tank Complete	
3	19717	Valve Rod	
4	17473	Distributor Hose	
5	17314	Valve Spring	
6	14341	Valve Rod End	
7	15796	Tank Cap Liner	
8	37911006	Valve Cap	
	17083DD	+ Tank Support	
	17083JM	+ Tank Support - 5300, 5308-01	
	169421FN	+ Tank Support - 5488-01	
10	12956	* Screw	
11	18853DN	+ Wheel Carriage	
	36432017	+ Wheel Carriage & Distributor - 5308-01, 5488-01	
12	32175003	Caster Wheel	
	32175004	+ Caster Wheel - JJ	
13	13306	* Ring	
14	35662AY	+ Wheel Shaft	
15	12979	* Ring	
16	18249	+* Washer	
17	17234DD	+ Valve Body	
18	48436045	Polishing/Scrubbing Brush	
19	19619AG	+ Scrubbing Brush	
20	18360	High Lustre Pads - Pair	
21	18362	C. & W. Pads - Pair	
22	15636	Rug Shampoo Brush	
23	18361	Felt Buffing Pads - Pair	
24	15844	Pad Fastener	

ITEMS NOT ILLUSTRATED

18996	Steel Wool Pads - Pair
37911052	+ Plug - JM - 5308-01, 5488-01

Handle, Hood & Bail

**Models 5300, 5308, 5308-01, 5471, 5477
5479, 5480, 5488-01, 5498**



161450DM + Tank Cap Lock
ITEMS NOT ILLUSTRATED

- 27317307 Dirt Finder Lamp - 5498
- 16125AY + Capsert - 5498
- 17252 +* Handle Rivet
- 19461 + Handle Cap
- 162179 + Screw - Lens - 5498
- 166610CP + Lens - 5498

Ref.	Part Description	No.	No.
1	19510LL + Handle & Cap w/Rivet 5300, 5471, 5477, 5479, 5480, 5488, 5498		
	48648022 Handle Comp. - Upper Half - 5471, 5477		
	17752LL + Handle Comp. - 5479		
2	12910 Cord Clamp		
3	48294AW Handle Bolt & Nut		
4	43138005 Control Housing		
5	21465314 * Screw		
6	17331 + Control Lever Rod		
7	162069AY + Valve Rod Bracket		
8	17251 + Cap Detent Bracket		
9	17942 * Screw		
10	18559 + Tank Stop		
11	17330JM Handle - Lower Half		
12	41415002 Bail Assem. - 5308, 5308-01, 5480, 5488, 5488-01, 5498		
	17348JM + Bail		
13	49433 +* Screw		
14	19978BG + Bail Arm Retainer		
15	17342AL + Hood - 5471		
	17342KK + Hood - 5479		
	17342BE + Hood - 5477		
	165978DR + Hood - 5300		
	166701DR + Hood Comp. - 5498		
	167017CD + Hood Comp. - 5308-01		
	167017DR + Hood Comp. - 5308		
	42271060 Hood Comp. - 5480, 5488		
	166699FN + Hood Comp. - 5488-01		
16	17293DN + Nameplate		
17	47779 + Hood Attachment Plate		
18	44099 +* Screw		
19	49571AY + Rivet		
20	17292JM + Furniture Guard		
21	12738 +* Screw		
22	49188 +* Screw		

Used on 5479 only

24	17772HH + Motor Cord		
25	160356 * Terminal		
26	13743A + Control Knob		
27	14863 +* Screw		
28	14820A + Speed Control Box		
29	14835 + Indicator Plate		
30	14821 + Spacer		
31	36935 + Speed Control Unit		
32	14839LL + Control Box - Bottom		
33	163434 + Pressure Pad		
34	12226 + Strain Relief Bushing		
35	14865 + Screw		
36	17252 +* Rivet		
37	162068 Control Rod - Threaded End		
38	162069AY + Valve Control Bracket		
39	162067 + Nut		
40	12763AW * Rivet		
41	161450JM + Tank Cap Lock - 5308-01		
	161450DC + Tank Cap Lock - 5488-01		